

SL SERIES

SLE450 / SLE550 / SLM450 / SLM550
Electric & Manual Cassette Steps



CASSETTE STEPS - SL

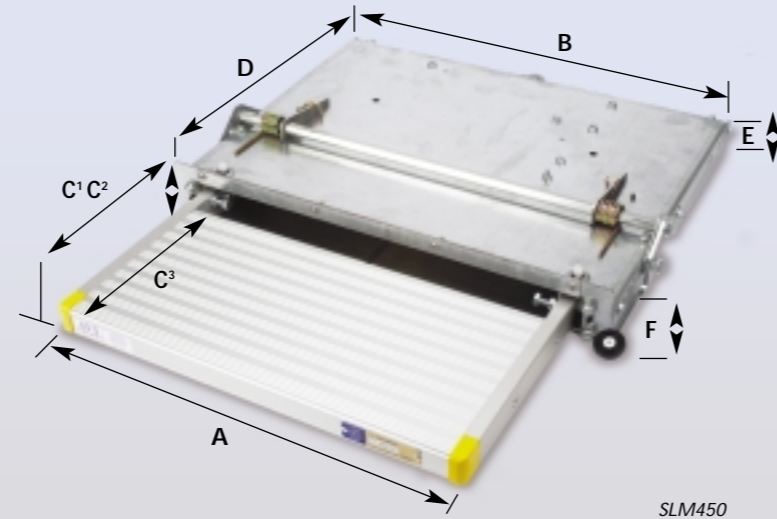
SLE450 • SLE550 • SLM450 • SLM550 CASSETTE STEPS

SL Steps - Dimensions & Weight

Designed to fit a vast range of accessible vehicles, cars, 4x4's and minibuses, taxis and ambulances. Examples include:

- > Mercedes Vito
- > Peugeot Expert (Fiat & Citroen)
- > VW T5
- > Renault Trafic (Vauxhall & Nissan)
- > Ford Tourneo
- > Iveco Plug Doors
- > Cab, side and power operated doors

We have an extensive range of steps and fitting kits to suit most requirements. Please ask because the SL will fit hundreds of vehicles.



SLM450

Note: Product Code:

Variations	SLE450	SLM450	SLE550	SLM550
Tread width A mm	457	457	557	557
Cassette width B mm	537	537	637	637
Weight Kg	20	18	23	23

Dimensions (mm)

	C ¹	C ²	C ³	D	E	F
450	46	245	200	405	46	70
450D	96	295	250	405	46	70
550 Electric	56	290	290	446	46	70
550 Manual	56	290	290	530	46	70

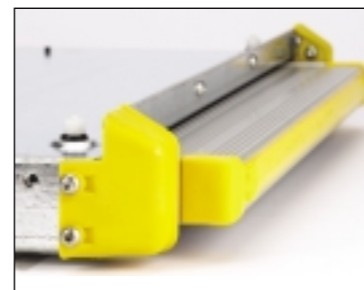
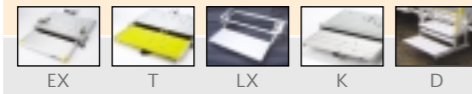


SLE550

25mm = 1 inch (approx) • 1Kg = 2.2lbs (approx)
C¹ = Tread depth stowed C² = Front of tread to cassette deployed C³ = Actual tread depth
Note: Manual locking mechanism protrudes 25 mm above cassette top surface.

Other steps from AVS include:

- EX Series – Electric Cassette Steps
- T Series – Compact Cassette Steps
- LX Series – Out and Down Steps
- K Series – Basic Cassette Steps
- D Series – Double Fold-Out Steps



SL - Stylish looks and sleek lines.



ISO 9001:2000 Registered
Certificate No. 1064

UK Office & Factory
AVS Steps Ltd.
Alders Farmhouse
Alders Lane • Whixall
Whitchurch • SY13 2PZ • UK
Tel: + 44 (0)1948 880010
Fax: + 44 (0)1948 880020
Email: sales@avssteps.co.uk
www.avssteps.co.uk

German Office:
AVS Steps Ltd.
Bergmannstraße 32
44809 Bochum
Deutschland
Tel: + 49 (0) 234 9571-510
Fax: + 49 (0) 234 9571-511
Email: monika.avs@gmx.de
www.avssteps.de



SLM550



SLE450

“Slim and stylish.
Safe and secure”



CASSETTE STEPS - SL

SL SERIES

SLE450 / SLE550 / SLM450 / SLM550

Electric & Manual Cassette Steps



The SL series of electric and manual steps has an incredibly slim cassette profile with a thickness of just 46mm making it ideal for vehicles where ground clearance is an issue. The SL looks good too. Its slim lines, moulded corners and neat tread design mean this is a step with style. A range of step treads and widths further add to the flexibility of the SL Series. With both manual foot operated and electric options, the SL can be used on a huge range of vehicles. From Mrs Brown in Dartford to Ambulance drivers in Dortmund, the SL improves access for thousands of people every day across the world. The SL series is the most versatile step ever offered by AVS and is suitable for:

- > Cars and 4x4's
- > Accessible vehicles & minibuses
- > Taxis
- > Mobility vehicles
- > Ambulances
- > Motor caravans and campers



- Outstanding features include:**
- > Rigorous testing equivalent to real life conditions.
 - > Heavy duty, reliable AVS Bosch motor.
 - > Galvanised steel case, with drop down cover and weatherproof protection strip.
 - > Self cleaning side arm action.
 - > Ideal for hundreds of applications.
 - > 1 year roadside warranty.
 - > Special corners reduce dirt ingress and meet Taxi standards.

For more information please contact us on:
+44 (0)1948 880010 or by email on
sales@avssteps.co.uk
Or visit our website: www.avssteps.co.uk

 > Durable plastic corners, aesthetically smart and designed to be safe	 > Side mounted pedal with maximum ground clearance	 > Fits a huge range of vehicles with specially designed fitting kits
 > Manual SLM stowed	 > SLM deploys with gentle safe action using intuitive pedal action	 > Sensitive edge option on SLE's
 > Easy open cover for cleaning and service		

“The SL Series is the most versatile step ever made by AVS”



AVS SL SERIES CASSETTE STEPS

Step platform options:
450X200mm, 450X250mm and 550X290mm.
Galvanised steel case.
Weather proof protection strip.
Self cleaning side arm action.
Aluminium tread assembly.
Stainless steel runners with nylon rollers.
Service should be every 6 months.
To maintain: clean and lubricate with silicone spray every 30 days or as required.

AVS SLE ELECTRIC CASSETTE STEP

DESCRIPTION
Electrically operated slide in, slide out cassette step providing safe access to passenger vehicles by halving entrance step heights. Quiet, smooth easy action. Operated by the driver/attendant (See options). Stows automatically when door closes for safety. Sensitive edge stops step independently of all other factors if an object is encountered (See options). Motor fitted with thermal cut-out protection. Emergency stow facility. 12V electric Bosch motor. Wiring loom consists of loom to dash from control box, loom to step from control box (body loom), control box with waterproof plugs to step. Dash mounted switch, bezel and red flashing warning light. Zero battery drain when stowed.

TECHNICAL
Voltage: 12V.
Current: Approx. 8-10 amps maximum during deploy and stow.
Deploy time: 1 second.
Stow time: 1 second.
Tested to: 225Kg / 500lbs.
SWL: 150Kg / 350lbs.

OPTIONS
Fully auto operation - simply swap the control box and switch to change to a fully automatic operation on the door. This is a no cost option when ordered with the step. Touch sensitive edge - stops power to motor on encountering any obstruction. Driver re-sets by releasing or re-pressing switch.

AVS SLM MANUAL CASSETTE STEP

DESCRIPTION
Foot operated slide in, slide out cassette step providing safe access to passenger vehicles by halving entrance step heights. Quiet, smooth easy action. Operated by the driver/attendant from outside of the vehicle. Heavy duty sprung pedal mechanism with intuitive action. "Gentle" gas spring deploy. Microswitch fitted as standard ready to wire to warning buzzer (See options).

TECHNICAL
Deploy time: 1.5 seconds (gas spring).
Stow time: 1.5 seconds approx. (by foot).
Tested to: 225Kg / 500lbs.
SWL: 150Kg / 350lbs.

OPTIONS
Warning buzzer - audible warning buzzer kit.

KEY INFORMATION

CERTIFICATION AVAILABLE

- ISO 9001:2000 Registered
- EMC Test Certificate No. 54*2852*00
 - Cycle test against resistance 500,000 cycles
 - Complies with directives:
 - 2001/85/EC Bus and Coach Directive
 - 95/54/EC Radio Interference Suppression
 - 98/37/EC Machinery Directive
 - 74/483 External Projections
 - Designed to meet SVA Standards
 - CE Marked

INSTALLATION

Flexible mounting points to cassette front lip, sides and rear. Easily mounts in numerous positions to sill, step box section supports at front and to chassis member or other inboard locations. Vehicle specific fitting kits options for a wide range of vehicles. The range of fitting kits is continuously expanding. Universal kits for other applications. Unique serial number making all AVS steps fully traceable. Individual service pack and maintenance record. On-site fitting service available throughout the UK.



WARRANTY

12 months warranty support. On-site maintenance and service packages available.

TYPICAL USES

- In particular:
- > Sliding side door and cab hinged doors.
 - > Power doors and plug doors.
 - > Cars, Minibuses, Taxis.
 - > Adapted vehicles for disabled people.
 - > Ambulances and accessible vehicles.
 - > Motor caravans and campers.

OPTIONS

Taxi regulation compliant corners in yellow to protect passengers, meet regulations, reduce dirt ingress and improve aesthetics of the step on any vehicle.

SPECIAL OPTIONS

Extra deep tread on the 450 steps, making the step depth 250mm.



SL for cars and 4x4's.



Sensitive edge protects vulnerable passengers.

CASSETTE STEPS - SL

CASSETTE STEPS - SL