

M8 x 25 with shake proof washer into M8 nutsert in chassis.

AVS Fitting Kits
TM or TE to Mercedes Vito
Side Door offside or nearside LHD/RHD

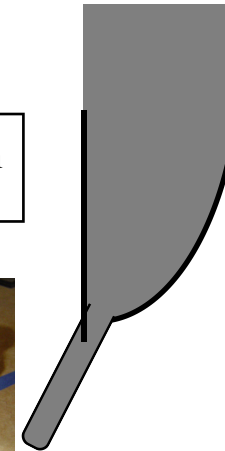
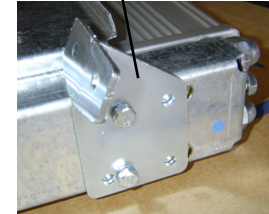
@ Copyright AVS 2003

NOTE:
Flexing of the rear brackets may be needed on some occasions. Fit to step first, align with chassis and then mark position of nut sert. Use slot in bracket to adjust height.

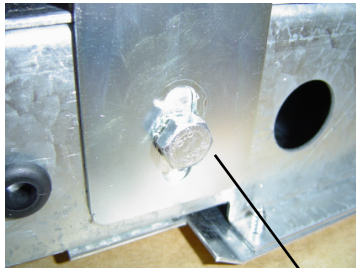
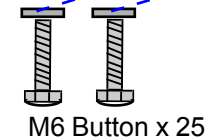
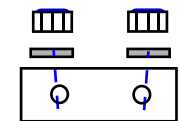
IMPORTANT NOTE

The E600C and TE/M600C must be mounted on the end fittings using the brackets provided. DO NOT fit to cill using any other method. Warranty will be invalidated.

NOTE: Location of bracket



Brackets at both end bolt-up behind cill lip, with bkg plate.



M8 x 25 with shake proof washer.



M6 x 12 with shake proof washers.

AVS T600C to Mercedes Vito

STEP HEIGHTS: In general it is recommended that the step from ground to the new AVS step is 1" (25mm) above the half way point to the next step. For example if the overall step height were 18" The AVS step should be set at 9.5" leaving a 8.5" second step on an unloaded vehicle.

IMPORTANT FITTING NOTES: Do not force or lever step to fit. Do not push or pull it to reach the cill. This will distort the case and result in early failure of the step and loss of warranty cover.

Do not tighten bolts until step is in final location. Use slotted holes to allow step to locate without forcing brackets or step case.

Mark locations for holes carefully. If repeated fittings are expected make up a suitable jig to ensure quick and accurate fitting.

Do not use longer bolts than advised in side mountings.