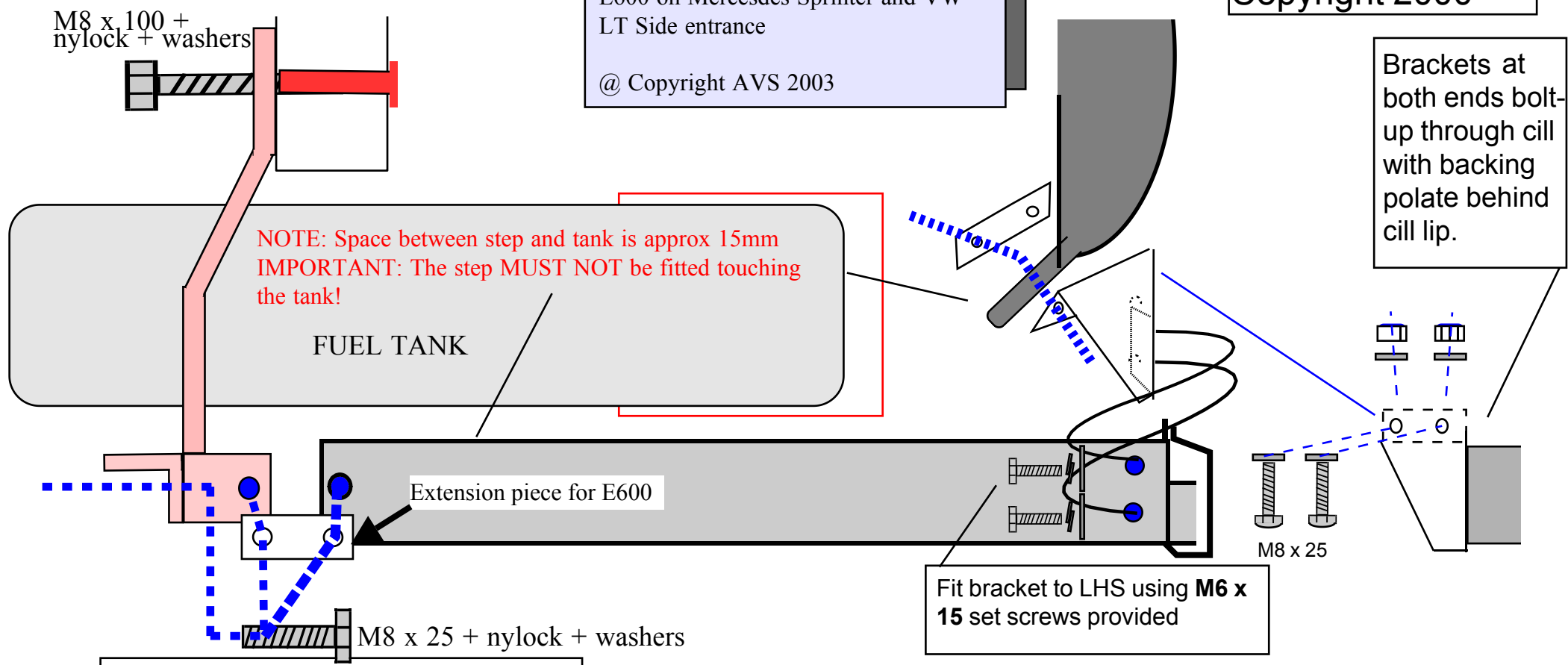


AVS Marketing Ltd
Copyright 2000

AVS Fitting Kits
E600 on Mercedes Sprinter and VW
LT Side entrance

© Copyright AVS 2003



STEP HEIGHTS: In general it is recommended that the step from ground to the new AVS step is 1" (25mm) above the half way point to the next step. For example if the overall step height were 18" The AVS step should be set at 9.5" leaving a 8.5" second step on an unloaded vehicle.

AVS E600C

IMPORTANT NOTE
The E600C must be mounted on the end fittings using the triangular brackets provided. DO NOT fit to cill using any other method. Warranty will be invalidated.

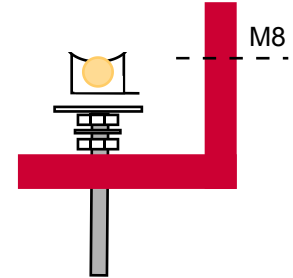
AVS Fitting Kits
Universal for E
Side or Cab Door
To fit E600C

@ Copyright AVS 2003

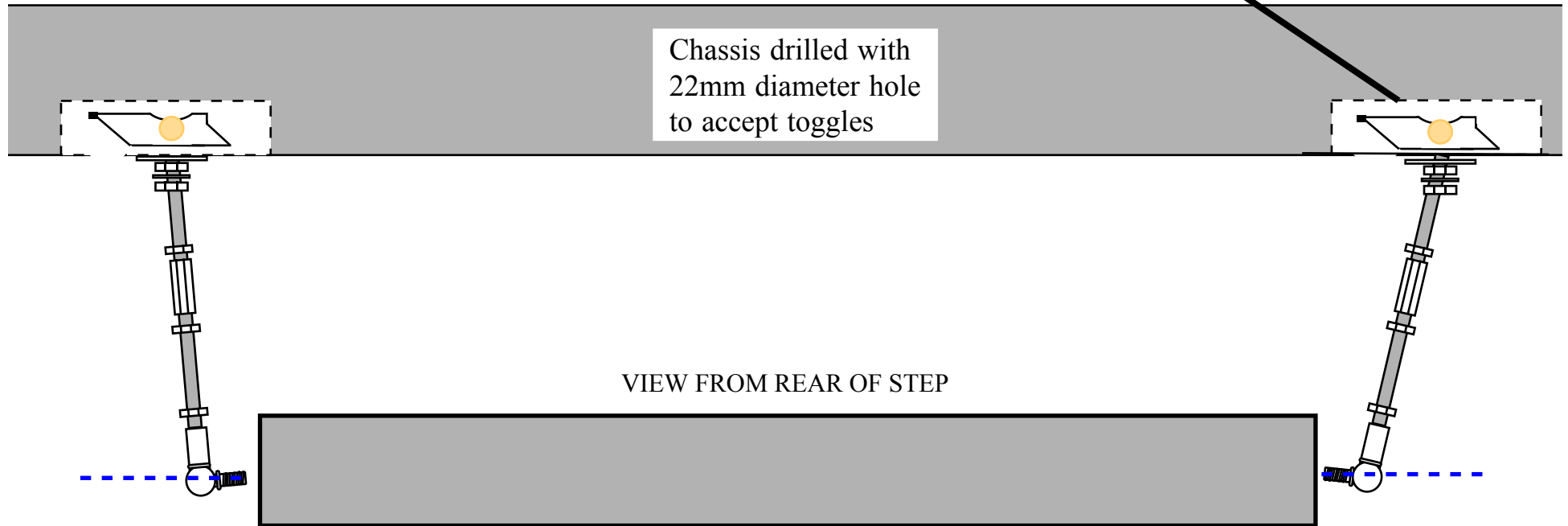
AVS Marketing Ltd
Copyright 2003

AVS E600C

OPTION ON SOME KITS



Chassis drilled with
22mm diameter hole
to accept toggles



TOGGLE - Toggle is weighted to drop down when passed through the hole drilled in the chassis

