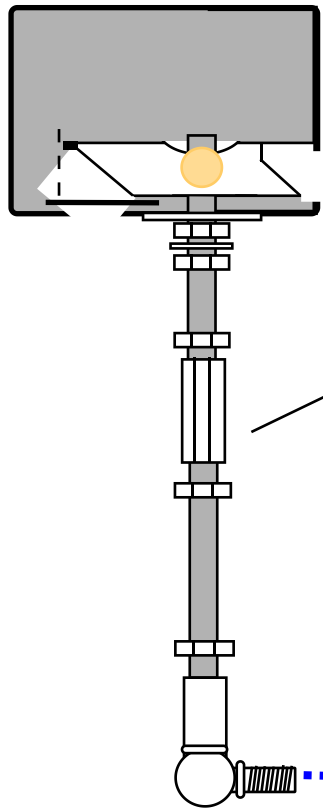


AVS Marketing Ltd
Copyright 2003

AVS Fitting Kits
Universal Kit for Taxi steps

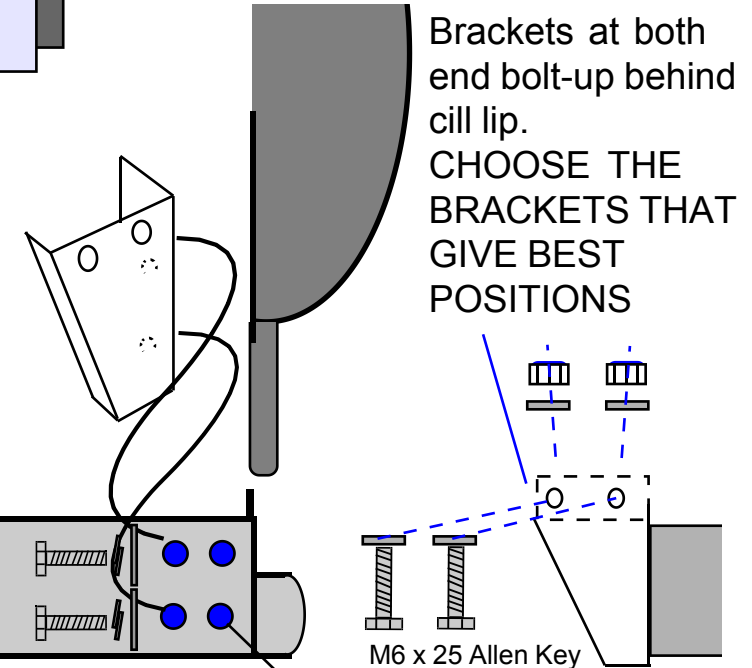
@ Copyright AVS 2003



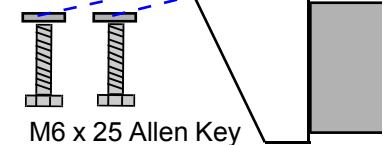
Uni strut (see next sheet for more information)

IMPORTANT NOTE

The E600C and TE/M600C must be mounted on the end fittings using the brackets provided. DO NOT fit to cill using any other method. Warranty will be invalidated.



Brackets at both end bolt-up behind cill lip.
CHOOSE THE BRACKETS THAT GIVE BEST POSITIONS



M6 x 25 Allen Key
Adjust rearward and forward using sets of holes on

M6 x 12 with shake proof washers.

AVS TM/TE600 Universal

STEP HEIGHTS: In general it is recommended that the step from ground to the new AVS step is 1" (25mm) above the half way point to the next step. For example if the overall step height were 18" The AVS step should be set at 9.5" leaving a 8.5" second step on an unloaded vehicle.

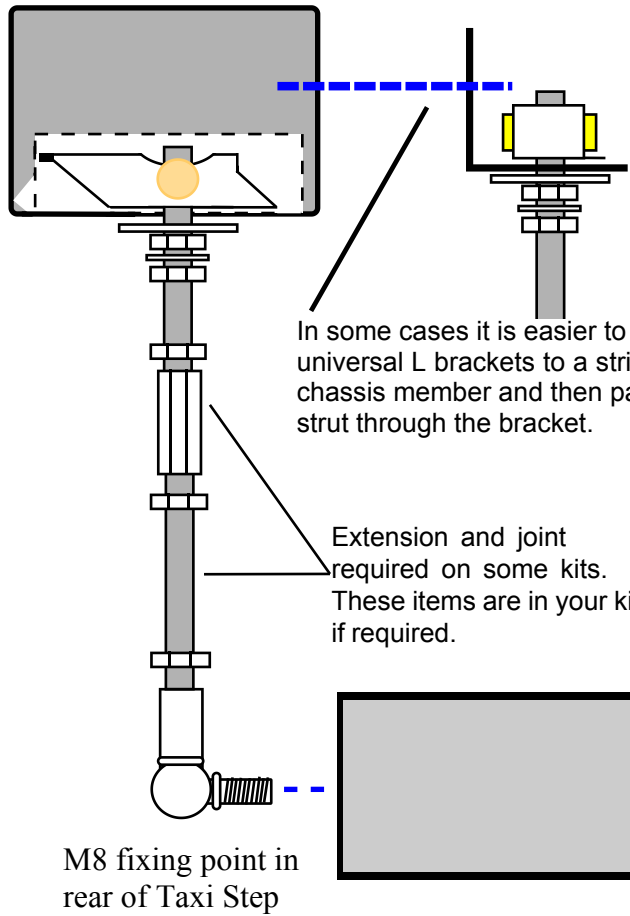
NOTE: Additional parts may be required at extra cost to enable the step to be fitted to some vehicles. The Universal kit is designed to allow AVS steps to fit to as many vehicles as possible. However dropper plates or extended struts or other items may be required in some cases. AVS are unable to ensure that the universal kit alone will fit all vehicles.

USE OF UNIVERSAL STRUT.

Strut can be bent and shaped to fit each vehicle type.

Use the Universal L bracket to mount to side of chassis or to out rigger.

Ensure step is level when complete.



In some cases it is easier to mount the universal L brackets to a stringer or chassis member and then pass the uni strut through the bracket.

Extension and joint required on some kits. These items are in your kit if required.

M8 fixing point in rear of Taxi Step