

AVS Fitting Kits
 UNIVERSAL FOR E600
 Side Door
 To fit E600C
 @ Copyright AVS 2003

AVS Marketing Ltd
 Copyright 2000

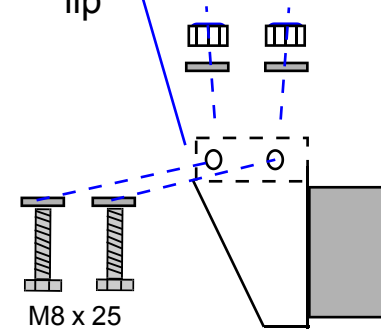
Extension and joint
 required on some kits.
 These items are in your kit
 if required.

IMPORTANT NOTE

The E600C must be
 mounted on the end
 fittings using the
 triangular brackets
 provided. DO NOT fit to
 cill using any other
 method. Warranty will
 be invalidated.

Fit bracket
 as supplied.

Brackets at
 both end bolt-
 up behind cill
 lip



AVS E600C

STEP HEIGHTS: In general it is recommended that the step from ground to the new AVS step is 1" (25mm) above the half way point to the next step. For example if the overall step height were 18" The AVS step should be set at 9.5" leaving a 8.5" second step on an unloaded vehicle.

NOTE: Additional parts may be required at extra cost to enable the step to be fitted to some vehicles. The Universal kit is designed to allow AVS steps to fit to as many vehicles as possible. However dropper plates or extended struts or other items may be required in some cases. AVS are unable to ensure that the universal kit alone will fit all vehicles.

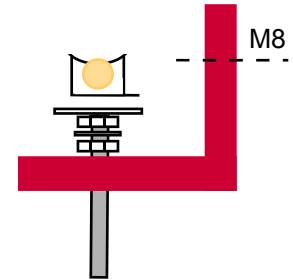
AVS Fitting Kits
Universal for E
Side or Cab Door
To fit E600C

@ Copyright AVS 2003

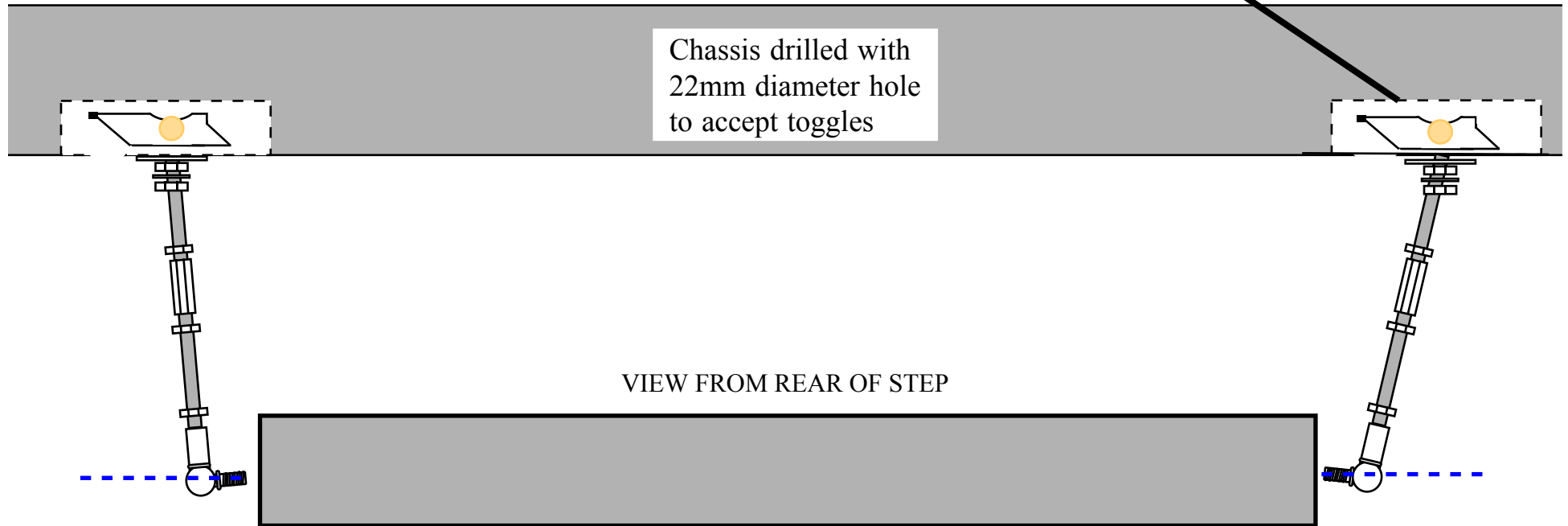
AVS Marketing Ltd
Copyright 2003

AVS E600C

OPTION ON SOME KITS

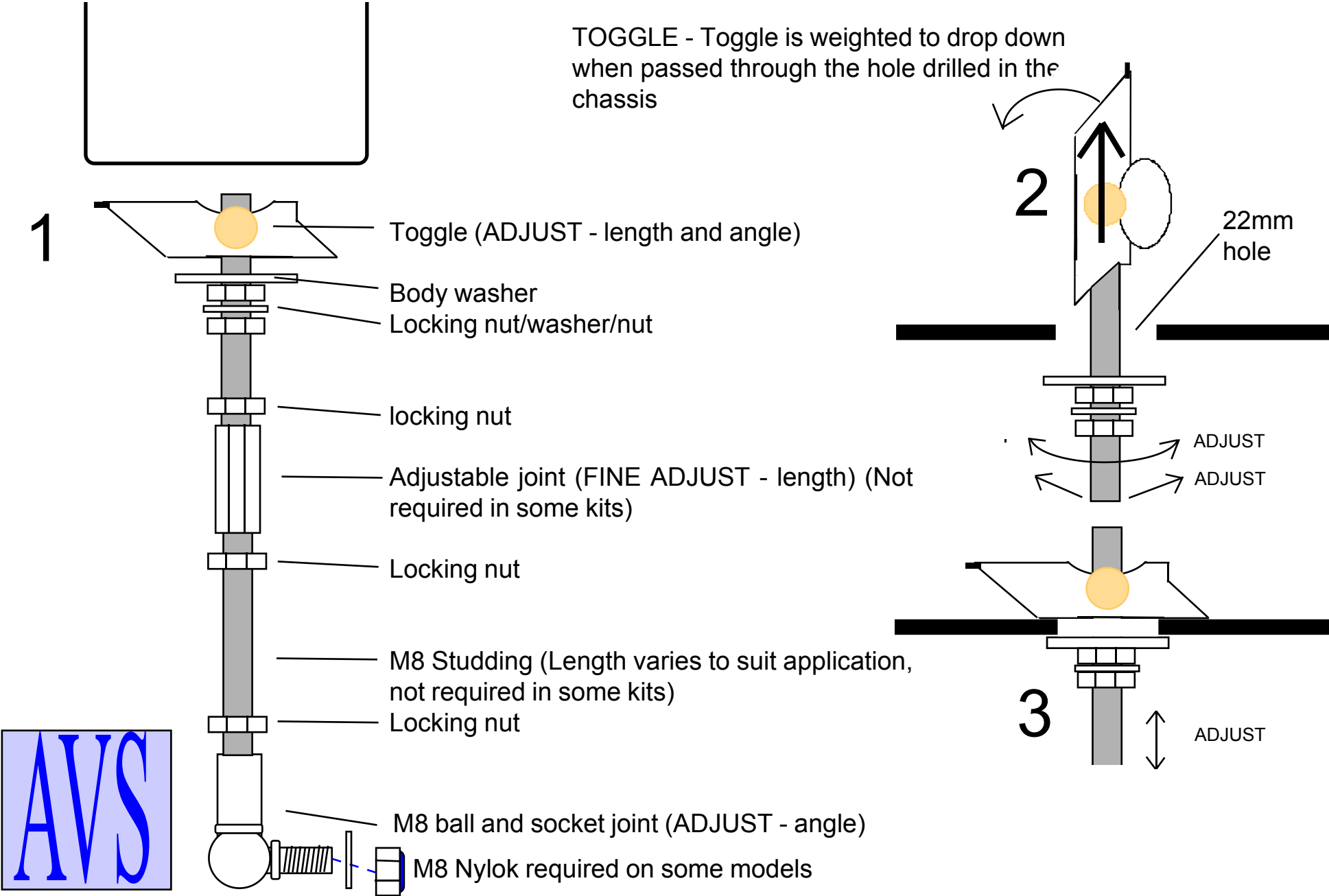


Chassis drilled with
22mm diameter hole
to accept toggles



VIEW FROM REAR OF STEP

TOGGLE - Toggle is weighted to drop down when passed through the hole drilled in the chassis



1

2

3

Toggle (ADJUST - length and angle)

Body washer

Locking nut/washer/nut

locking nut

Adjustable joint (FINE ADJUST - length) (Not required in some kits)

Locking nut

M8 Studding (Length varies to suit application, not required in some kits)

Locking nut

M8 ball and socket joint (ADJUST - angle)

M8 Nylok required on some models

22mm hole

ADJUST

ADJUST

ADJUST