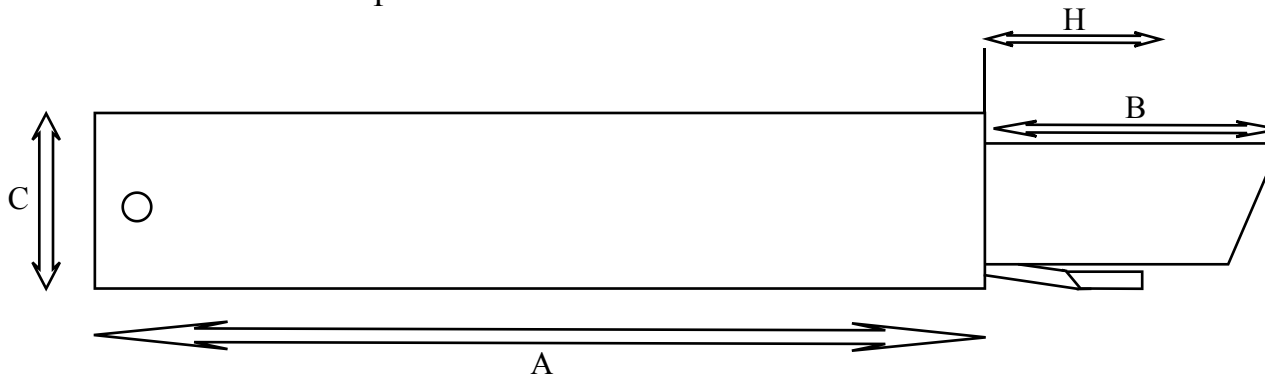
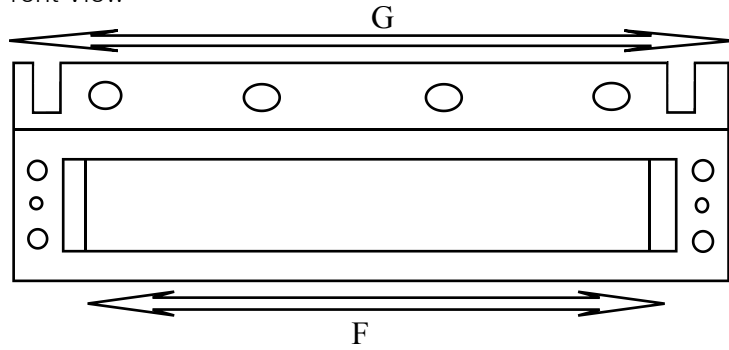
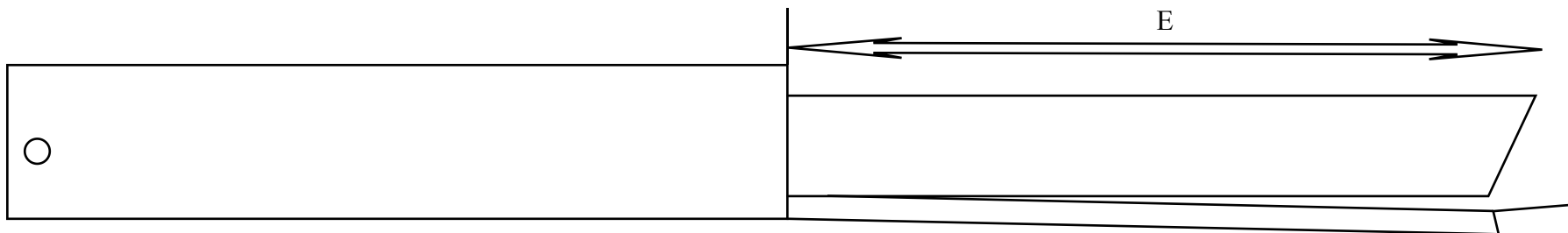


KM600D: Manual Deep Tread K Step

Front View



Side View: Step Stowed



Side View: Step Deployed

	Description	MM	Inches
A	Case depth to start of visible tread	470	18 1/2
B	Tread depth when stowed	102	4
C	Case thickness	76	3
D	Overall Height	115	4 1/2
E	Visible tread deployed	305	12
F	Tread width	610	24
G	Case width	686	27
H	Front of tread to mounting point 1	58	2 1/3

(Drawings are NOT to scale)