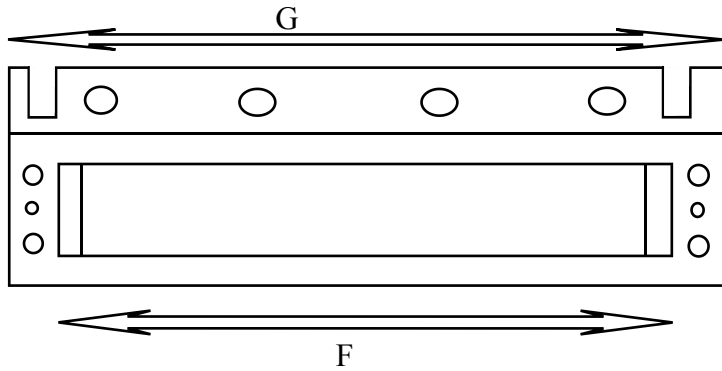
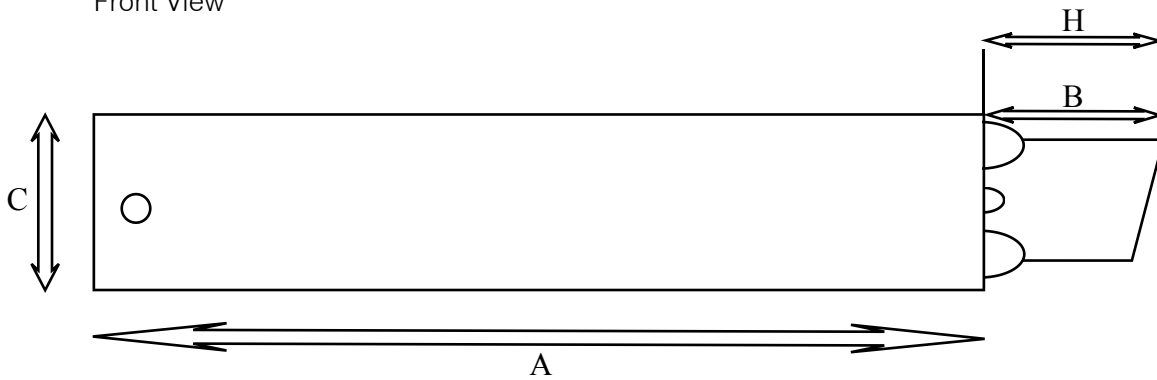


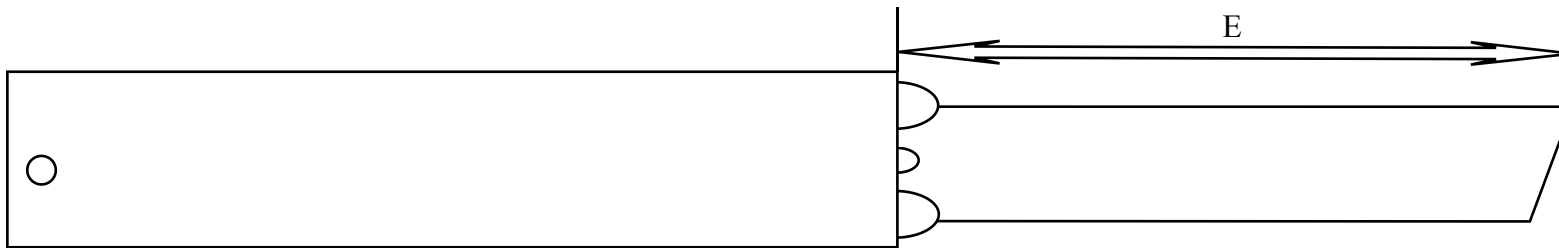
KE600BZ: Electric K Type



Front View



Side View: Step Stowed



Side View: Step Deployed

	Description	MM	Inches
A	Case depth to start of visible tread	470	18 1/2
B	Tread depth when stowed	32	1 1/4
C	Case thickness	76	3
D	Overall Height	115	4 1/2
E	Visible tread deployed	254	10
F	Tread width	610	24
G	Case width	686	27
H	Front of tread to mounting point 1	38	1 1/2

(Drawings are NOT to scale)