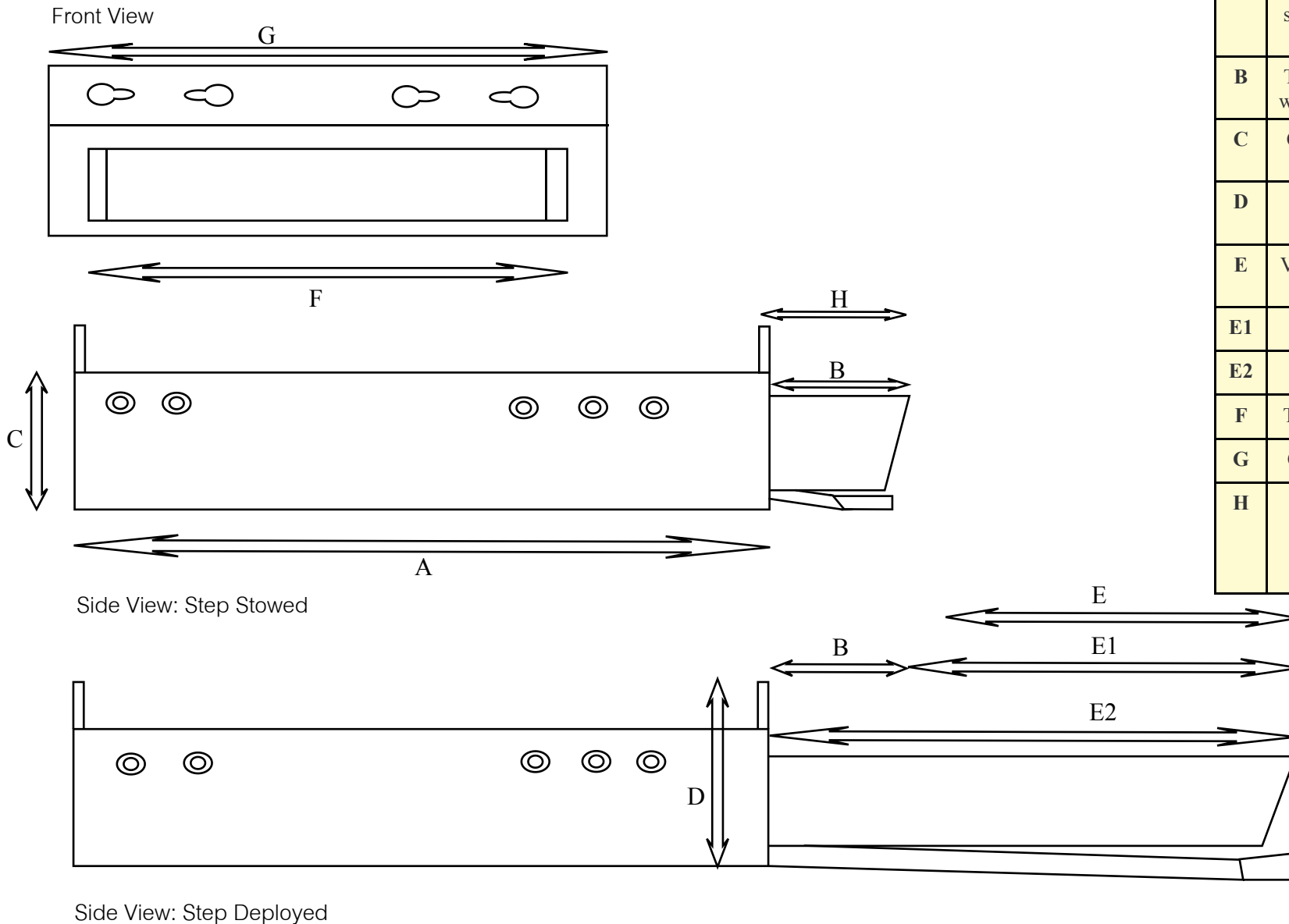


EXM600R



	Description	MM	Inches
A	Case depth to start of visible tread	495	19 1/2
B	Tread depth when stowed	36	1 3/8
C	Case thickness	64	2 1/2
D	Overall Height	86	3 3/8
E	Visible tread deployed	250	9 13/16
E1	Reach	263	10 3/8
E2	E1 + B	299	11 3/4
F	Tread width	863	34
G	Case width	653	25 3/4
H	Front of tread to mounting point 1	36	1 3/8

(Drawings are NOT to scale)