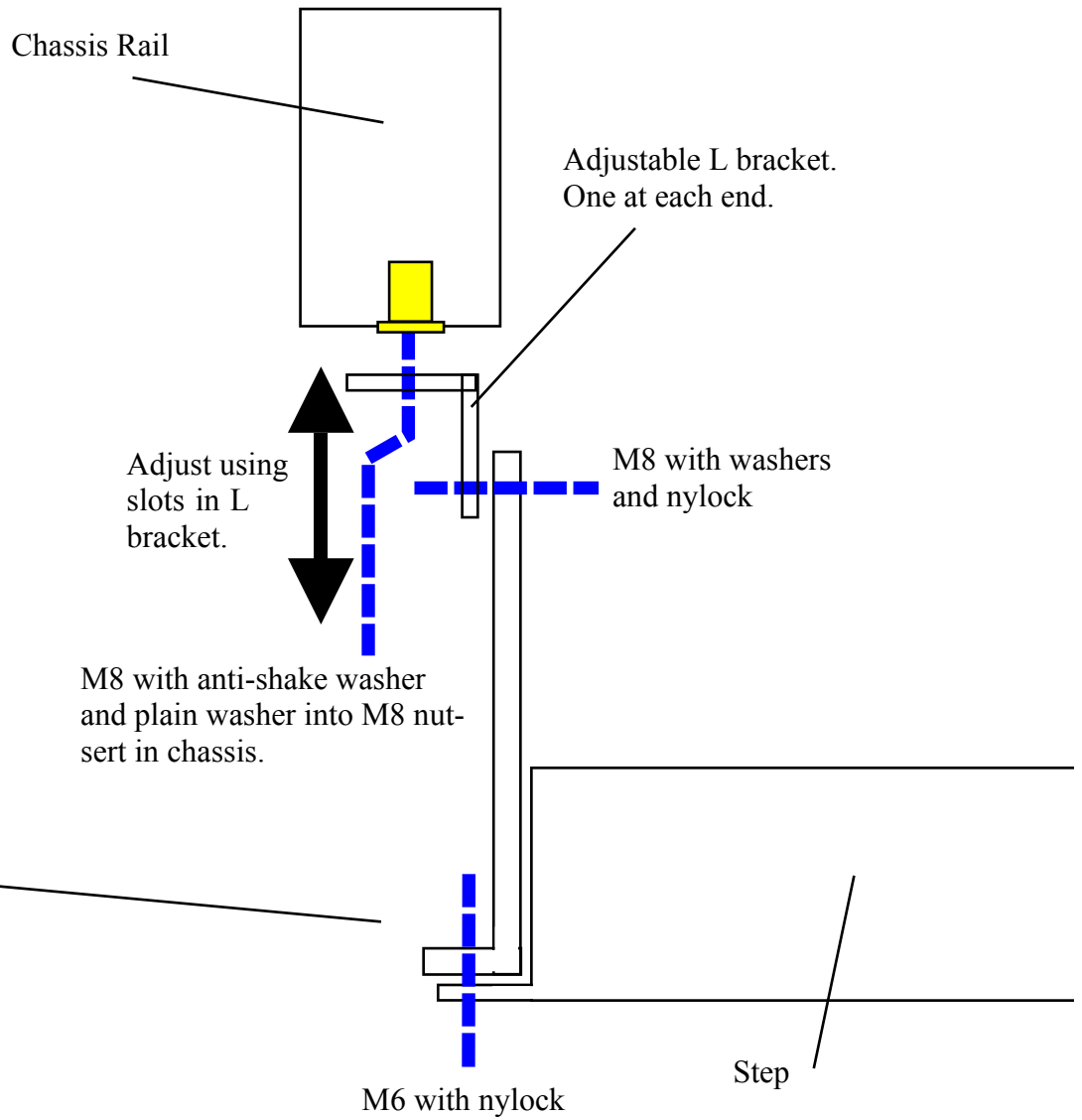
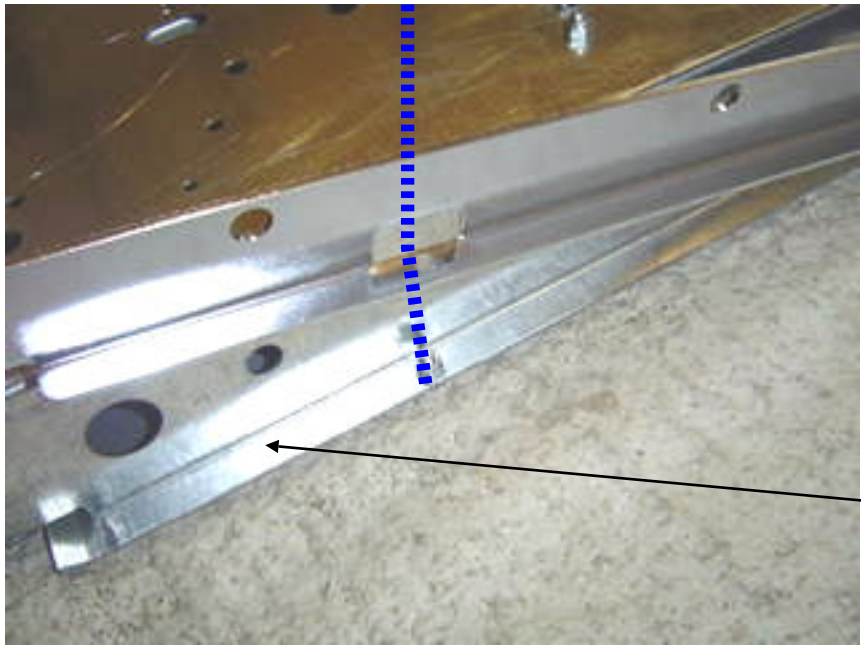
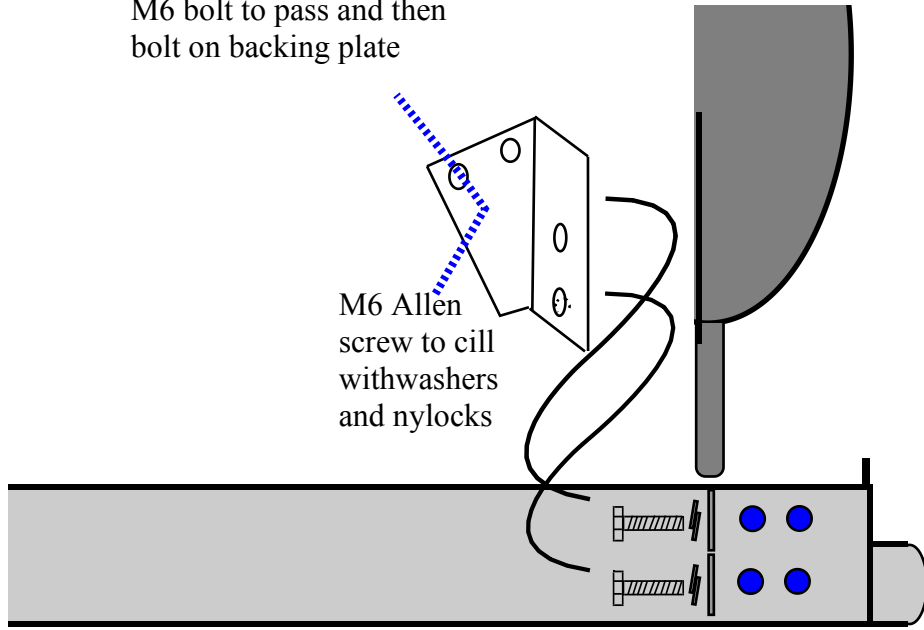


Rear U bracket bolts to step using existing M6 x 12mm bolts. These need to be removed and then replaced to fit bracket. Feed wire through hold in bracket.



Fitting TE and TM to Kia Sedona.
General fitting instructions

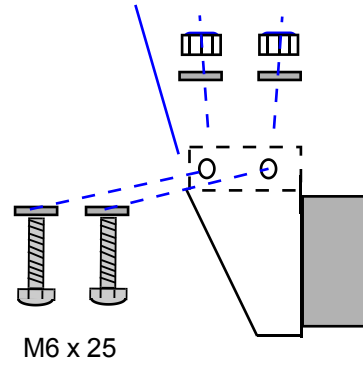
Drill through cill to allow
M6 bolt to pass and then
bolt on backing plate



M6 Allen
screw to cill
with washers
and nylocks

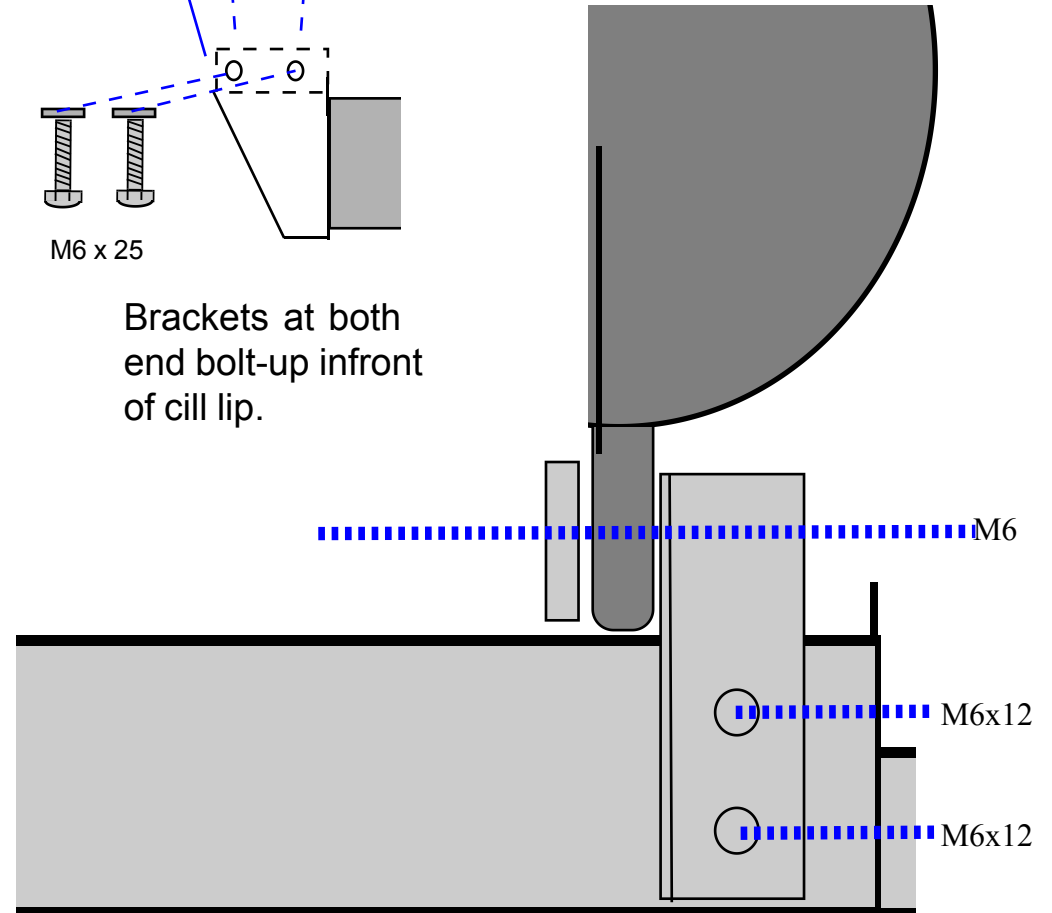
IMPORTANT NOTE

The E600C and TE/
M600C must be mounted
on the end fittings using
the brackets provided. DO
NOT fit to cill using any
other method. Warranty
will be invalidated.



M6 x 25

Brackets at both
end bolt-up in front
of cill lip.



Fitting TE and TM to Kia Sedona.
General fitting instructions